

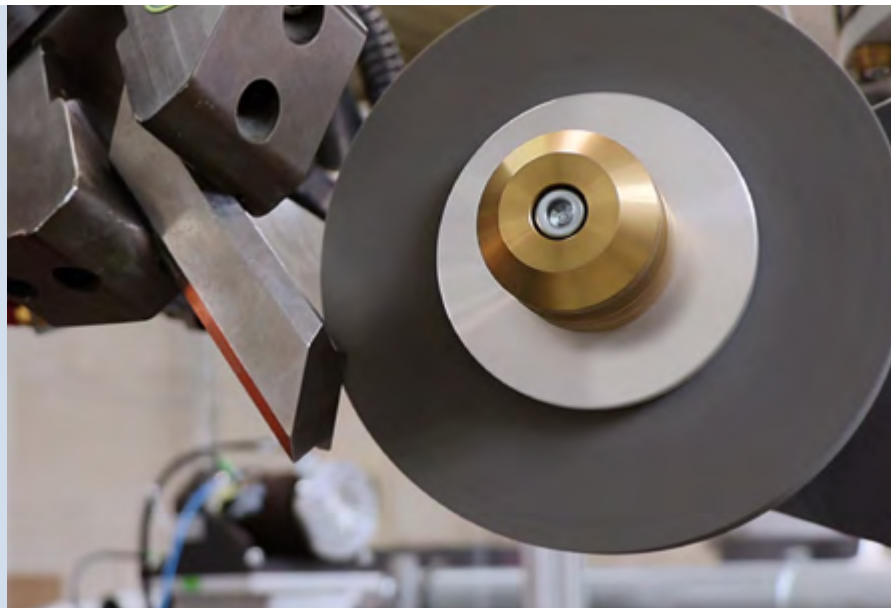
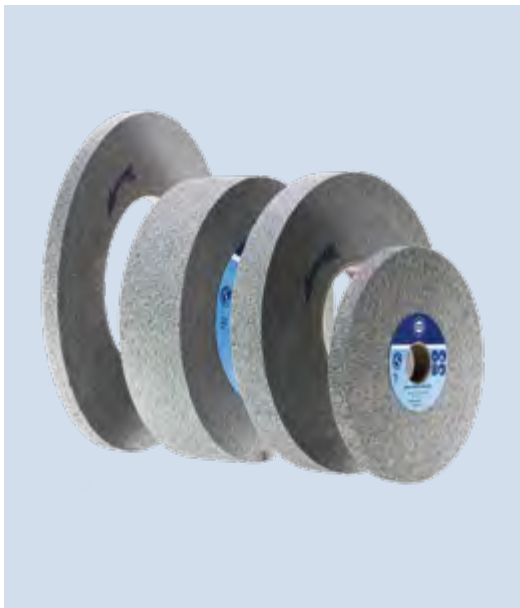


# WEBRAX-CW

## Non-woven convolute wheels for deburring and surface finishing of metal workpieces

### Your advantages

- Very long tool life with consistent high quality results
- Refined, reproducible surface finish
- Designed for the processing of flat or intricately contoured surfaces
- Manual and automated application
- Top price / performance ratio



	WEBRAX-CW	COMPETITOR
Application	Manual deburring of bores on crankshafts made of hardened and tempered alloyed steel	
Deburring quality	■ ■ ■	■ ■ ■
Surface roughness (R <sub>a</sub> )	■ ■ ■	■ ■ ■
Price/ Performance ratio	■ ■ ■	■ ■ ■



for an excellent finish

## webrax-CW

Non-woven convolute wheels for deburring and surface finishing of metal workpieces

Materials	Metals such as aluminum, steel, stainless steel, titanium, nickel, cobalt-chromium alloys		
Work pieces	Turbine blades, motor parts, tanks, vessels, housings, stamped metal sheets, tubes, implants, surgical instruments		
Application areas	Manual or robotic applications for the <ul style="list-style-type: none"><li>• Removal of burrs and sharp edges</li><li>• Elimination of small defects or discolorations</li><li>• Surface finish with low roughness values</li></ul>		
Your advantages	<ul style="list-style-type: none"><li>• Consistently high surface quality during the entire tool life</li><li>• Very long tool life</li><li>• Suitable for flat and complex surfaces</li><li>• Economical grinding</li><li>• Universal applicability</li></ul>		
Abrasive grain	Silicon carbide (S) or aluminum oxide (A)		
Bonding	Resin (free from tissues of animal origin)		
Backing	Nylon non-woven		
Specifications	▲ 7S-FIN DE = softest wheel 8S-FIN DE 9S-FIN-X2 DE = hardest wheel  8A-MED DE = highest removal rate		
Dimensions	<b>Outer-Ø</b>	<b>Width</b>	<b>Inner-Ø</b>
	152.4 mm / 6"	12.7 mm / ½" 25.4 mm / 1"	25.4 mm / 1"
	203.2 mm / 8"	50.8 mm / 2"	76.2 mm / 2"
	254.0 mm / 10"	12.7 mm / ½"	127.0 mm / 5"
	Additional dimensions available upon request		
Further information	For an overview of all available stock items, please refer to our separate webrax-CW stock list.		



### PLEASE CONTACT US

Detailed information and literature for download at [hermes-abrasives.com](https://hermes-abrasives.com).

You will find your direct contact person in the [Contacts](#) section.

**HERMES** Schleifmittel GmbH  
Taskoepruestrasse 1 • 22761 Hamburg • Germany  
[hermes-abrasives.com](https://hermes-abrasives.com)

